



4 Tonne

Specification

WWW.HAPP.COM.AU

# HAPP 40

Business Ready

2 Post Electric - Hydraulic lift

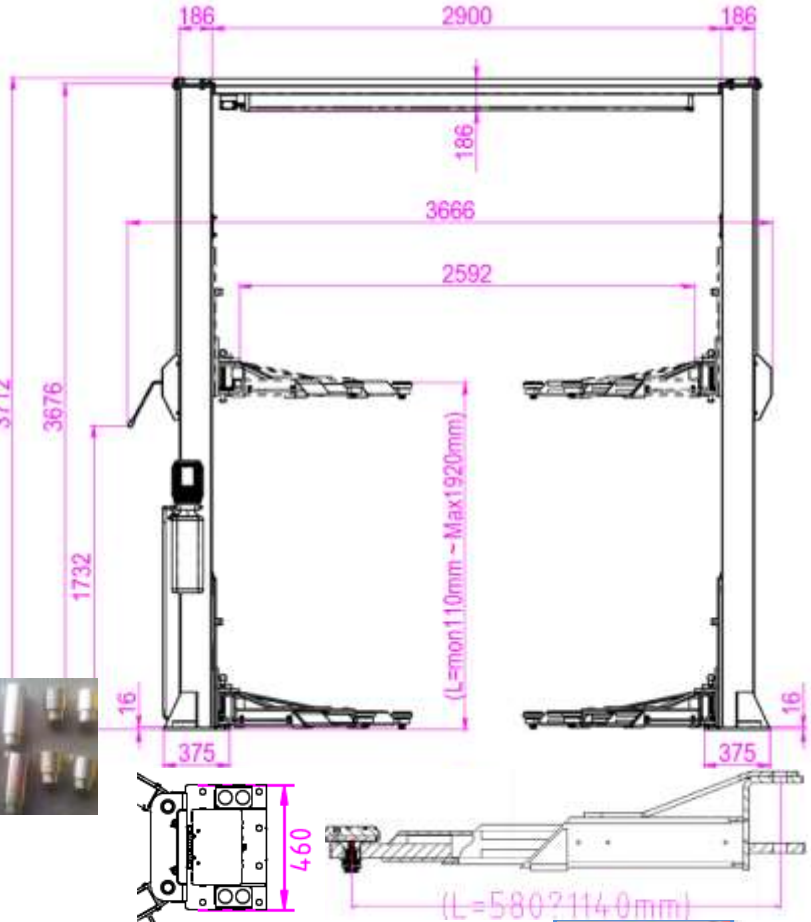
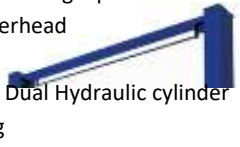
Clear floor – Single point safety release

4 x 3 Pc robot welded generation 2 arms



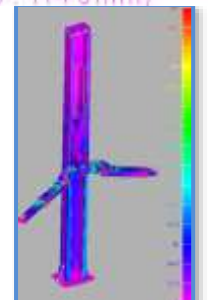
## Features

- Australian Standards **Tested** and **Certified**
- Ready for use in businesses, Workplace Health and safety registration kit available
- Release both column safeties from single point
- Control cables, hoses routed overhead
- Over height protection
- Carriages move synchronously , Dual Hydraulic cylinder drive, stable lifting and lowering
- Dynamically tested with 125% of rated capacity and static test with 150% of rated capacity
- Hard line hydraulics
- 5mm thick columns
- 16mm thick base plate
- 20mm Tru-bolt design anchor bolts
- HAPP Generation 2 3Pc 580-1140 mm arms
- HAPP Screw up drop in pad design
- HAPP Ultra strong carriage
- 3" + 6" spacers standard
- Connector to external limit switch
- 3 yr structural warranty [happ.com.au/warranty/](http://happ.com.au/warranty/)
- Access to HAPP customer group buy plan
- Many options available:
  - ❖ Extra stability; big base plates, stabilizer bars
  - ❖ Low profile car ramps for very low cars
  - ❖ Generation 2 long arms 890-1420mm
  - ❖ Generation
  - ❖ Alternate anchor bolts, extra spacers, spare motors ...



Full structural and Australian

Standards analysis in Queensland  
 Dimensions are info Standards analysis in Queensland  
 Do not pre drill anchor bolts based on drawing



Capacity	Lifting Height *	Rise Time	Drop Time	Power Supply	Drive through	Height of rack	Width at base plate	Pillar Width	Net Weight
4.0T	1920mm	<50s	>20s	240/415v-15A	2592mm	3712 mm	3452mm	2900mm	713Kg