

ABN: 85164277052
HAPP AUSTRALIA PTY LTD

4.5 Tonne

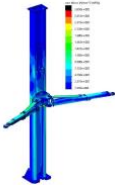


WWW.HAPP.COM.AU

Specification

HAPP 45Pi

(Precision Inverted)
Business Ready



2 Post Electric - Hydraulic lift
4.5T, Single point safety release,

Direct drive **INVERTED** cylinder, Gen2 Asymmetric arms

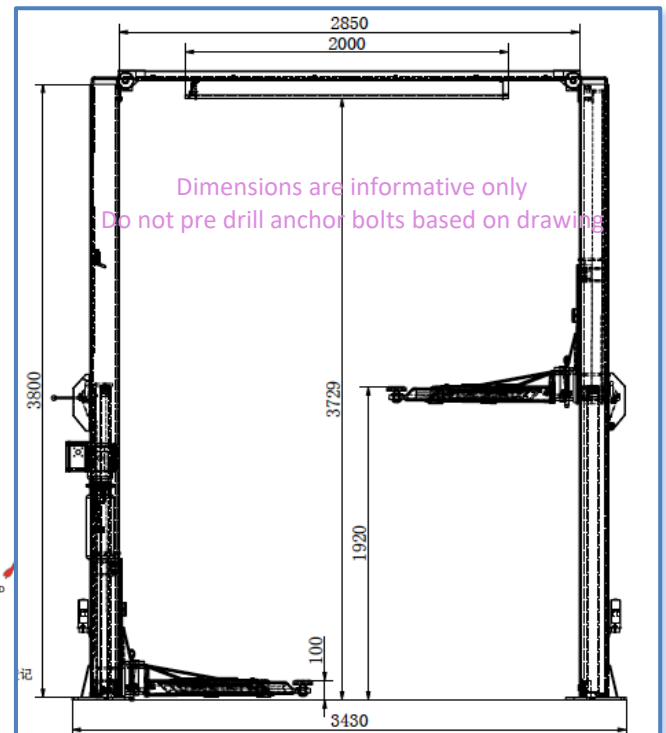
Fully robotic and CNC machine made with very latest world class technology

Features

- Australian Standards **Tested** and **Certified**
- Robot welded Asymmetric Gen 2 Arms
- Robot welded Column and Carriage
- Robot folded Column
- Direct drive cylinders – less moving parts
- CNC machined parts
- Ready for use in businesses, Workplace Health and safety registration kit available
- Release both column safeties from single point
- Control cables, hoses routed overhead
- Over height protection
- Carriages move synchronously, Dual Hydraulic cylinder drive, stable lifting and lowering
- Dynamically tested with 125% of rated capacity and static test with 150% of rated capacity by HAPP to Aus Standards
- CE certified (Europe and USA)
- 5mm thick columns
- 16 mm thick base plate
- 20mm Tru-bolt design anchor bolts
- HAPP Screw up drop in pad design
- Aus std tested arm locks
- 3" + 6" spacers standard
- 12 month manufacturer parts warranty
- Many options available:
 - ❖ Extra stability; big base plates, stabilizer bars
 - ❖ Low profile car ramps for very low cars
 - ❖ Oil drains for cleaner oil change operation



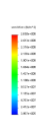
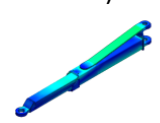
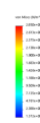
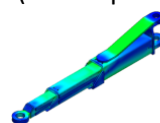
ABN: 85164277052
HAPP AUSTRALIA PTY LTD



3Pc and 2Pc HAPP GEN 2.1 precision Robot welded higher steel grade arms with extended range 580-1140mm and 890-1420mm Enable easier centring of vehicles especially large 4WD on this lift and easier access to doors as vehicle can be further back on lift. (note: 3pc arms GEN 2.1 for extra load)

See videos of our robot production line in action

<https://happ.com.au/factory>



Capacity	Lifting Height *	Rise Time	Drop Time	Power Supply	Base Width	Max Height	Outside column	Inside Column	Net Weight
4.5T	1920-2120mm+	<50s	>20s	240/415v-15A	3430mm	3904mm	3210mm	2850mm	713Kg