

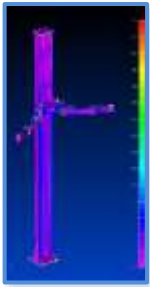
4 Tonne

Specification

HAPP 80

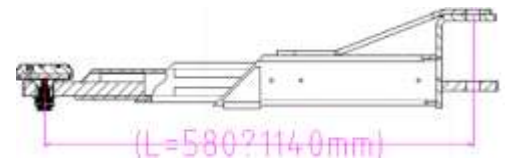
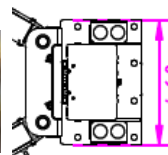
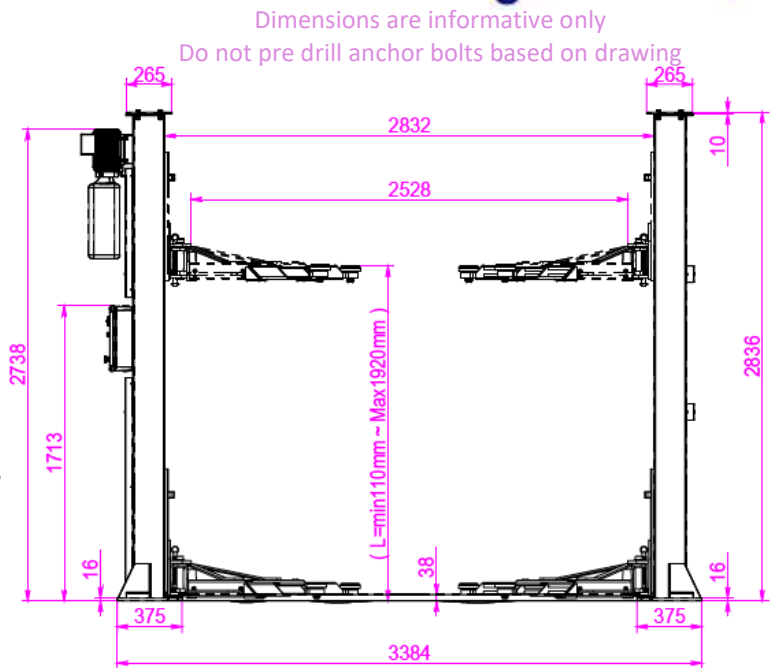
2 Post Electric - Hydraulic lift
Floor Plate – Full electronic control

4 x 3 Pc robot welded generation 2 arms



Features

- Massive 1920mm lift height
- Full low voltage panel operation - 24V CE control box
- Over height limit switch
- HAPP Generation 2 3Pc arms – 580-1140mm
- Dual Hydraulic cylinder drive, stable lifting and lowering
- All steel balance cables for equalization, both carriages move synchronously
- 20mm Tru-bolt design anchor bolts
- Dynamically tested with 125% of rated capacity and static test with 150% of rated capacity
- Upgraded from CE certified (Europe and USA) with HAPP Aus Std designs.
- 5mm thick columns, 16mm thick base plate
- HAPP Ultra strong Gen 2 carriage / arm locks
- HAPP 2 stage Screw up drop in pad design
- 2" + 6" spacers standard
- 3 yr structural warranty - happ.com.au/warranty/
- Many options available:
 - ❖ Extra stability; big base plates, stabilizer bars
 - ❖ Low profile car ramps for very low cars
 - ❖ Oil drains for cleaner oil change operation
 - ❖ Super long Gen 2 2Pc arms - 890-1420mm



Built to Structural analysis and Australian Standards review in Queensland



Capacity	Lifting Height	Rise Time	Power Supply	Power of Motor	Drive Thru	Column width	Column height	Width at base plate	Net Weight
4.0T	1920mm	<50s	240v-15A	2.2 Kw	2528mm	2832mm	2836mm	3384mm	630Kg

Specifications are subject to change without notice.