

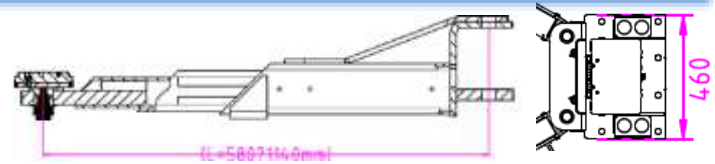
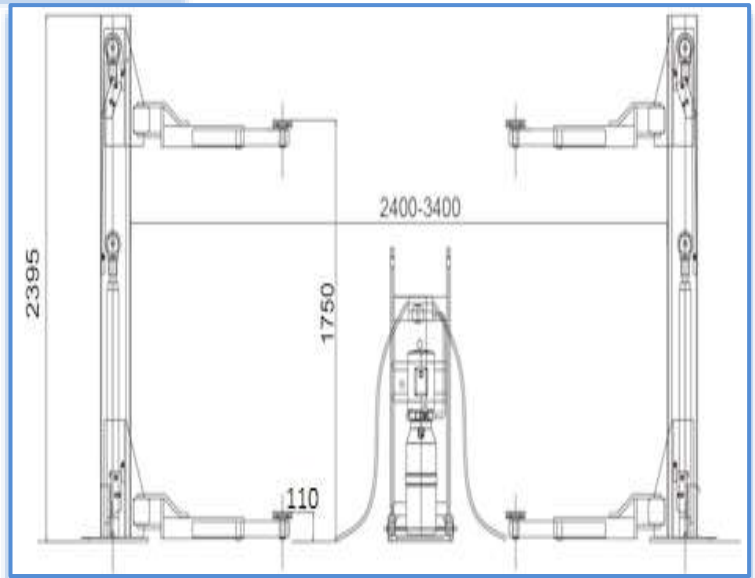


HAPP 95

High Lift 2 Post Electric - Hydraulic hoist
 Clear floor – No overhead beam - Movable - Two side multi
 point safety latch
 Australian Standard robot welded 3 Pc generation 2 arms

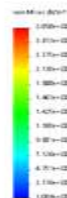
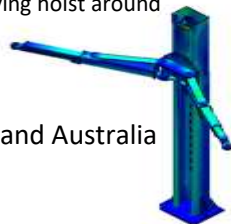
Features

- All hydraulic balance control, clear floor, no balance control cables, no overhead beam
- Australian standards, arm, carriage, column
- Low 2.4m height columns
- High 1750mm lift (more with pad thread, spacers)
- Work safely at multiple lift heights with HAPP standard ratchet safety mechanism
- Install in multiple locations
- Dual Hydraulic cylinder drive, stable lifting and lowering
- Dynamically tested with 125% of rated capacity and static test with 150% of rated capacity
- Load vehicles from both directions
- 16mm thick base plate, 5mm thick columns
- Curtain over working components
- 4 x HAPP Gen 2 Robot 3Pc arms 580-1140mm
- HAPP 2 stage screw up drop in pad design
- 3 yr structural warranty - happ.com.au/warranty/
- 2" + 6" spacers standard
- Connector to external limit switch
- Standard steel tank + aluminium motor – 15A, 240V, Single Phase (3 phase optional)
- Many options available:
 - ❖ Extra stability; big base plates, stabilizer bars
 - ❖ Low profile car ramps for very low cars
 - ❖ Oil drains for cleaner oil change operation
 - ❖ Alternate anchor bolts loxins or use Ramset Dyna set
 - ❖ Wheel kits to assist in moving hoist around



Full structural and Australian

Standards analysis in Queensland Australia



Capacity	Lifting Height	Rise Time	Drop Time	Power of Motor	Power Supply	rack	rack	base plate	Weight
3.0T	1750mm	<40s	>20s	2.2 Kw	240v/ 415v	adjustable	2420mm	adjustable	500Kg